



2 Gloucester Drive, Sale, M33 5DH

Offers Over £450,000

www.jordanfishwick.co.uk





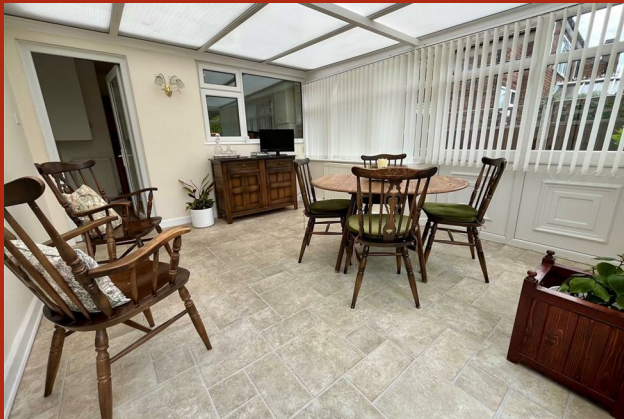
Jordan fishwick

- Detached Bungalow
- Two Double Bedrooms
- Garage & Driveway
- Council Tax Band - D
- No Chain
- Beautiful Manicured Gardens
- Conservatory to Rear
- Sought After Location
- EPC - D

A well maintained DETACHED BUNGALOW in the sought after leafy suburbs of Sale, on a generous plot with manicured gardens. This lovely home offers generously proportioned and flexible accommodation throughout.

Briefly comprising; porch, entrance hallway, spacious bay fronted living room, fitted kitchen leading into conservatory with patio doors onto the garden, two double bedrooms and a bathroom with four piece suite. The property is fully double glazed and warmed by gas central heating (Worcester Bosch combi boiler). Externally, the property is set back from the road, with beautifully manicured front and rear gardens. The rear garden is mainly laid to lawn with mature stocked borders and patio area for seating. The detached garage and driveway are accessed via Taunton Road. CALL NOW TO VIEW!

NO CHAIN. COUNCIL TAX BAND D. EPC - D





Floor Plans

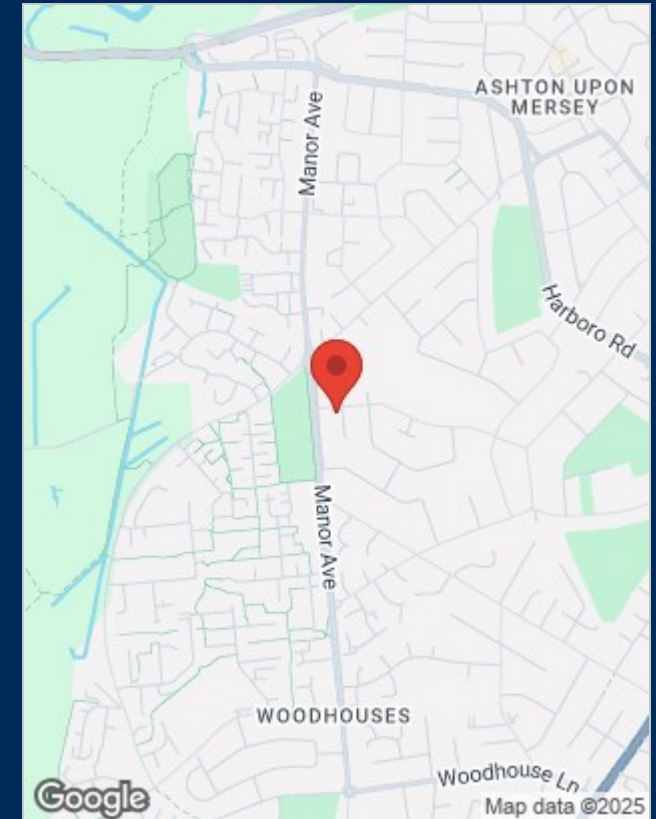


Viewing

Please contact our Sale Office on 0161 962 2828 if you wish to arrange a viewing appointment for this property or require further information.

The particulars are set out as a general outline only for the guidance of intended purchasers or lessees, and do not constitute, any part of a contract. Nothing in these particulars shall be deemed to be a statement that the property is in good structural condition or otherwise nor that any of the services, appliances, equipment or facilities are in good working order. Purchasers should satisfy themselves of this prior to purchasing.

Location Map



Energy Performance Graph

